



PERIOD
HOMES



Newland Street
Witham CM8 2AQ
£895,000

Newland Street, Witham, CM8 2AQ

Dorothy L. Sayers' Former Residence: An Historic Gem in Witham's Heart

Nestled in the vibrant heart of Witham, the former residence of renowned English crime writer Dorothy L. Sayers presents a unique opportunity to own a piece of literary history. This Grade II listed property, affectionately known as 'Dorothy Sayers Cottage,' boasts a rich heritage dating back to the 1500s and offers a blend of historical charm and modern convenience.

Historical Significance:

Dorothy L. Sayers (1893–1957), celebrated for her creation of the fictional detective Lord Peter Wimsey, was not only a prolific author but also a playwright, translator, and essayist. Her tenure at this residence is commemorated with a plaque on the Georgian façade, marking the property's significance in literary history.

Architectural Features:

The property's timber-framed structure, enhanced with a mock Georgian façade by the Victorians, reflects its historical evolution. The current owners have cherished this home for over five decades, ensuring its preservation and upkeep. Key features include:

- Three spacious and inviting reception rooms, one featuring a most wonderful open fire.
- Multiple double bedrooms, with the main bedroom showcasing exposed beams.
- Superb original features, including Georgian-style sash windows, traditional joinery, and a classic staircase with curved handrail.

Outdoor Space and Amenities:

The property is set on a generous plot, with a private, part-walled cottage garden, described as 'a picture in the summer'. Parking is ample, accommodating up to five vehicles, including a garage, accessed via a gated (shared) car park to the rear of the property.









NEWLAND STREET

Approx. Gross Internal Area 232.9 Sq M (2507 Sq Ft)



PERIOD
HOMES

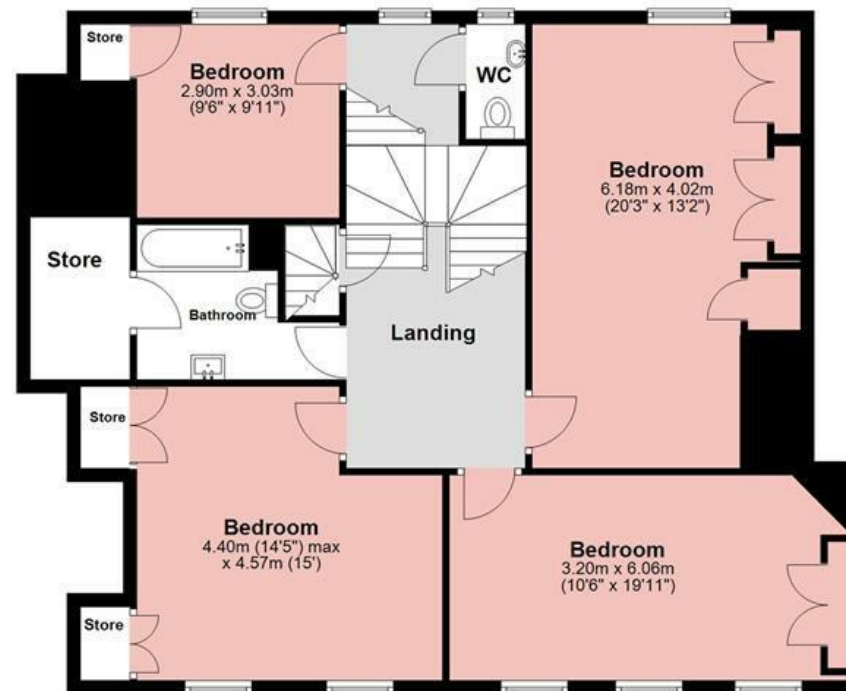
Ground Floor

Approx. 98.8 sq. metres (1063.8 sq. feet)



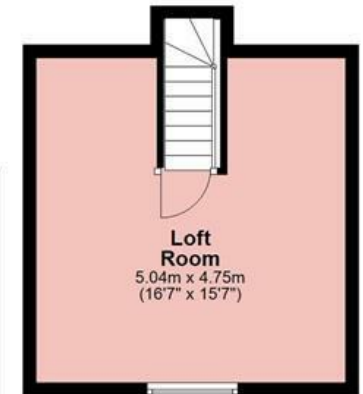
First Floor

Approx. 109.8 sq. metres (1182.3 sq. feet)

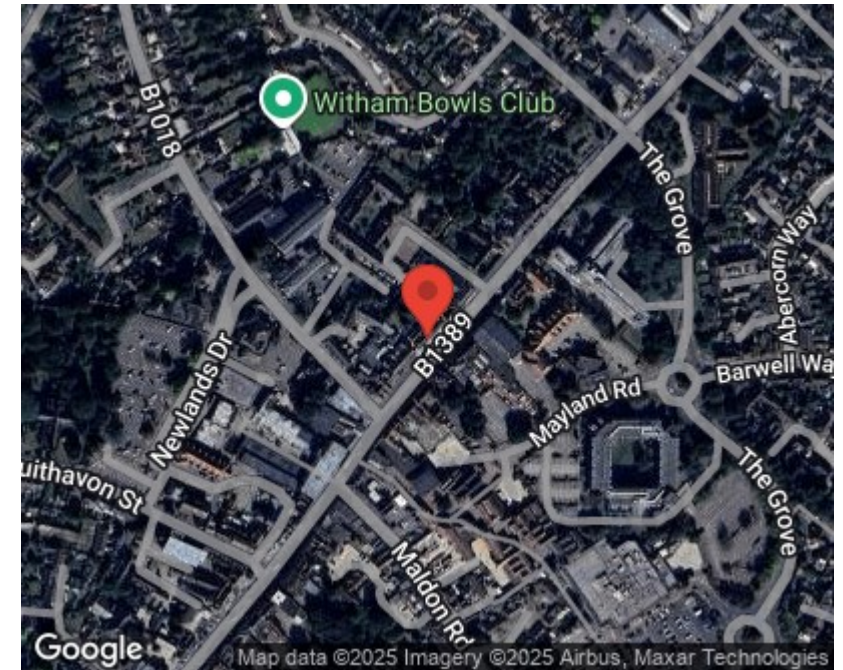
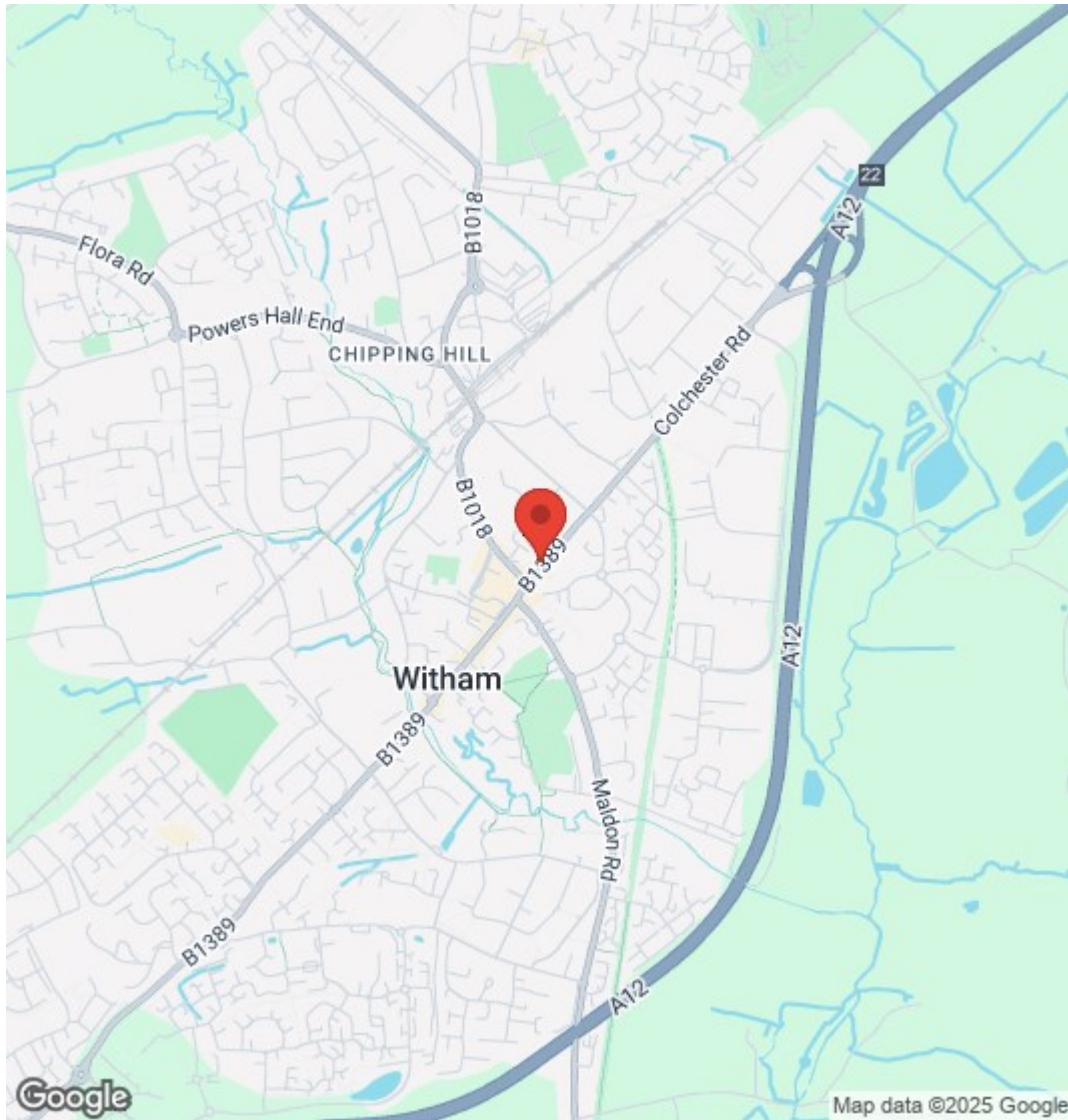


Second Floor

Approx. 24.2 sq. metres (260.9 sq. feet)



Measurements are approximate and for illustration purposes only. While we do not doubt the accuracy and completeness, we advise you conduct a careful independent assessment of the property to determine monetary value.



PLEASE CALL 01277 288000 TO ARRANGE A VIEWING
www.periodhomes.co.uk

INDEPENDENT ESTATE AGENTS - VALUATIONS WITH NO OBLIGATION - PROFESSIONAL SERVICE

These particulars do not constitute any part of an offer or contract. All measurements are given as a guide, no liability can be accepted for any errors arising therefrom. No responsibility is taken for any other error, omission, or mis-statement in these particulars.

Period Homes, a trading style of Walkers Village and Country Homes Limited do not make or give, whether in these particulars, during negotiations or otherwise, any representation whatsoever in relation to this property.

